



Stay ahead of the **trac**

How to connect your iTrac GPS unit



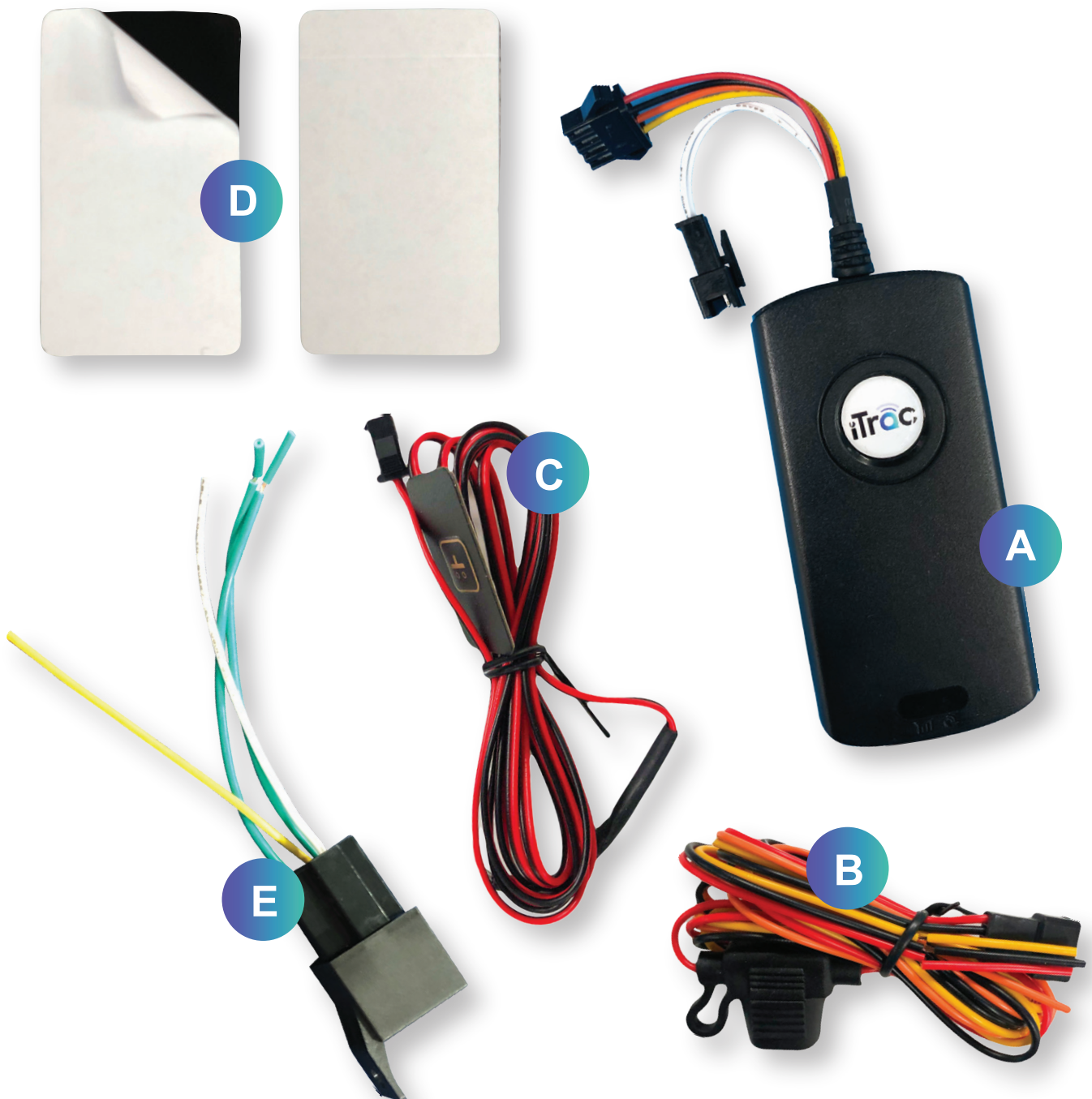
**Congratulations on your
iTrac purchase**

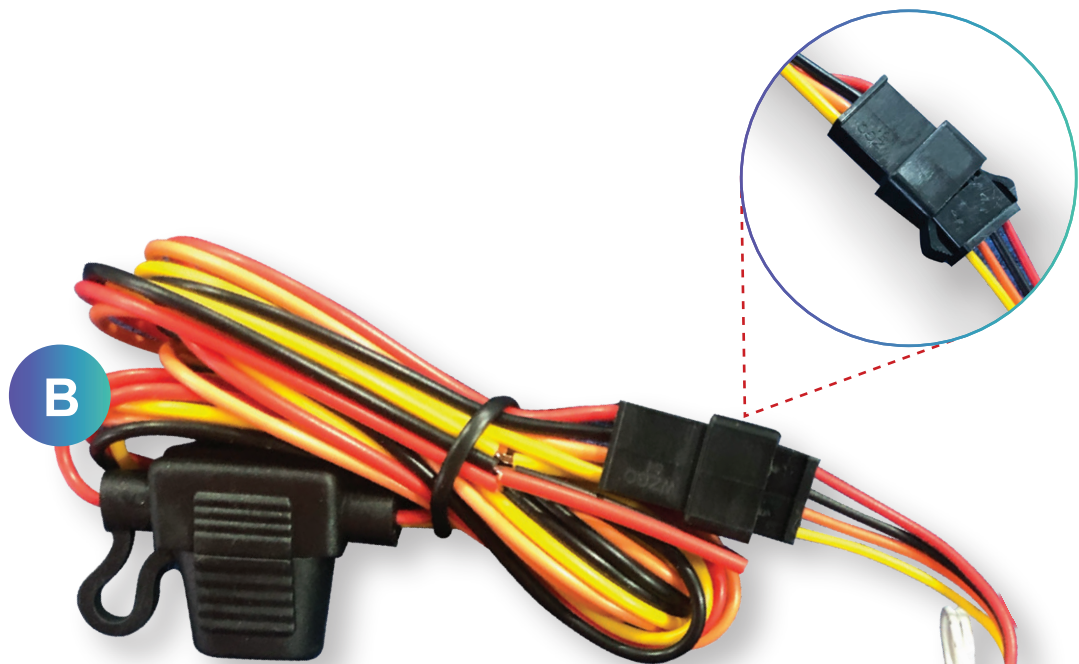


GPS Tracking made easy

GPS box contains all the necessary items to get you started on your Itrac journey. include

- (A) GPS Unit
- (B) Accessory cables which include your (Positive +) and (Negative -) Cables
- (C) (S.O.S) Button
- (D) Double sided tape velcro for mounting desirable locations on your vehicle
- (E) Relay (optional extra for immobilizing vehicle)





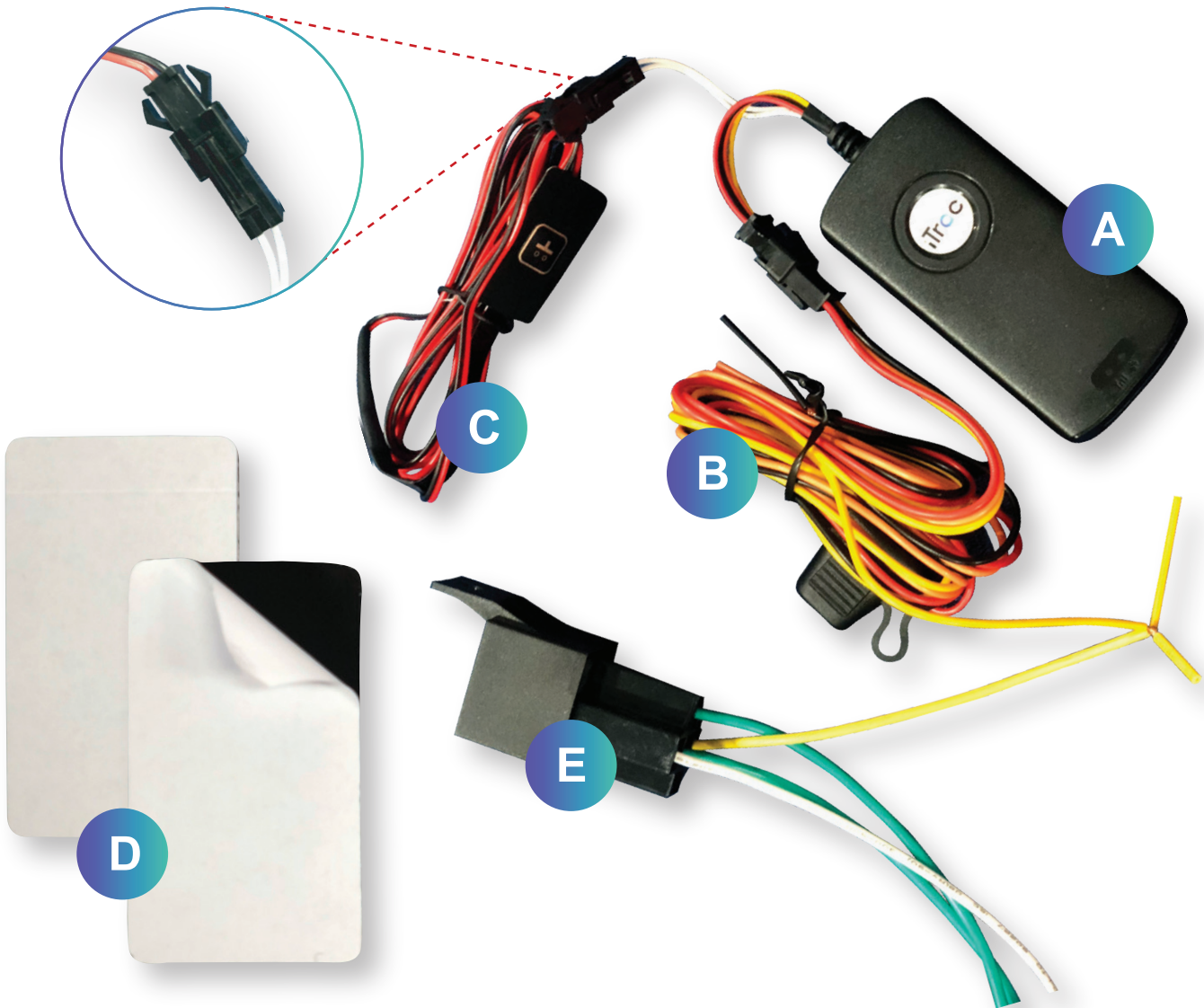
- (1) Connect Positive+ (**Red Cable**) to direct power
- (2) Connect Negative- (Black Cable) to Battery or Earth Cable
- (3) Connect accessories (**Orange cable**) to the car accessorie



If connected properly, the **GPS** unit (**A**) will flash **Blue** which indicates power is now connected to the **GPS** unit (**A**)

Connecting the SOS feature

- (1) Connect the Plug for SOS feature **(C)** to the GPS unit (white cable) **(A)**
- (2) Peel the rear of the SOS button **(C)** to expose the double sided Tape
- (3) Use the Double sided Velcro **(D)** Provided to mount the GPS in desired Location. (Preferably a dry area in the Vehicle)



Connecting the immobilise relay feature (optional)

- (1) Connect the White cable on the relay feature **(E)** straight to the power source
- (2) Connect the Yellow cable on the relay feature **(E)** to the yellow cable on the accessory lume **(B)**
- (3) Connect the Green wire(s) on the relay feature **(E)** directly to the selected power source that is to be used to immobilise the vehicle such as fuel pump etc